

S.No. : 158

BID 2204

No. of Printed Pages : 04

Following Paper ID and Roll No. to be filled in your Answer Book.

PAPER ID : 20706

Roll
No.

--	--	--	--	--	--	--	--	--	--	--	--	--	--	--	--	--	--	--	--

BID Examination 2021-22

(Even Semester)

INTERIOR GRAPHICS SKILLS - II

(Manual)

Time : Three Hours

[Maximum Marks : 60

- Note :-**
- (i) Attempt all the sections.
 - (ii) Marks are indicated against each question.
 - (iii) Assume any missing data.

SECTION - A

1. Write short notes on the following questions : $8 \times 1 = 8$
- (a) Isometric view
 - (b) Shade and shadow
 - (c) Oblique view
 - (d) Metric drawing

[P. T. O.]

- (e) H. L.
- (f) G. L.
- (g) P. P.
- (h) Human eye level

SECTION – B

2. Attempt any three parts of the following : $3 \times 4 = 12$

- (a) Draw 1 point perspective of interior of drawing room.
- (b) Draw shade and shadow of given Figure-1.
- (c) Draw 1 point perspective of given Figure-2.
- (d) Draw 2 point perspective of given Figure-2.

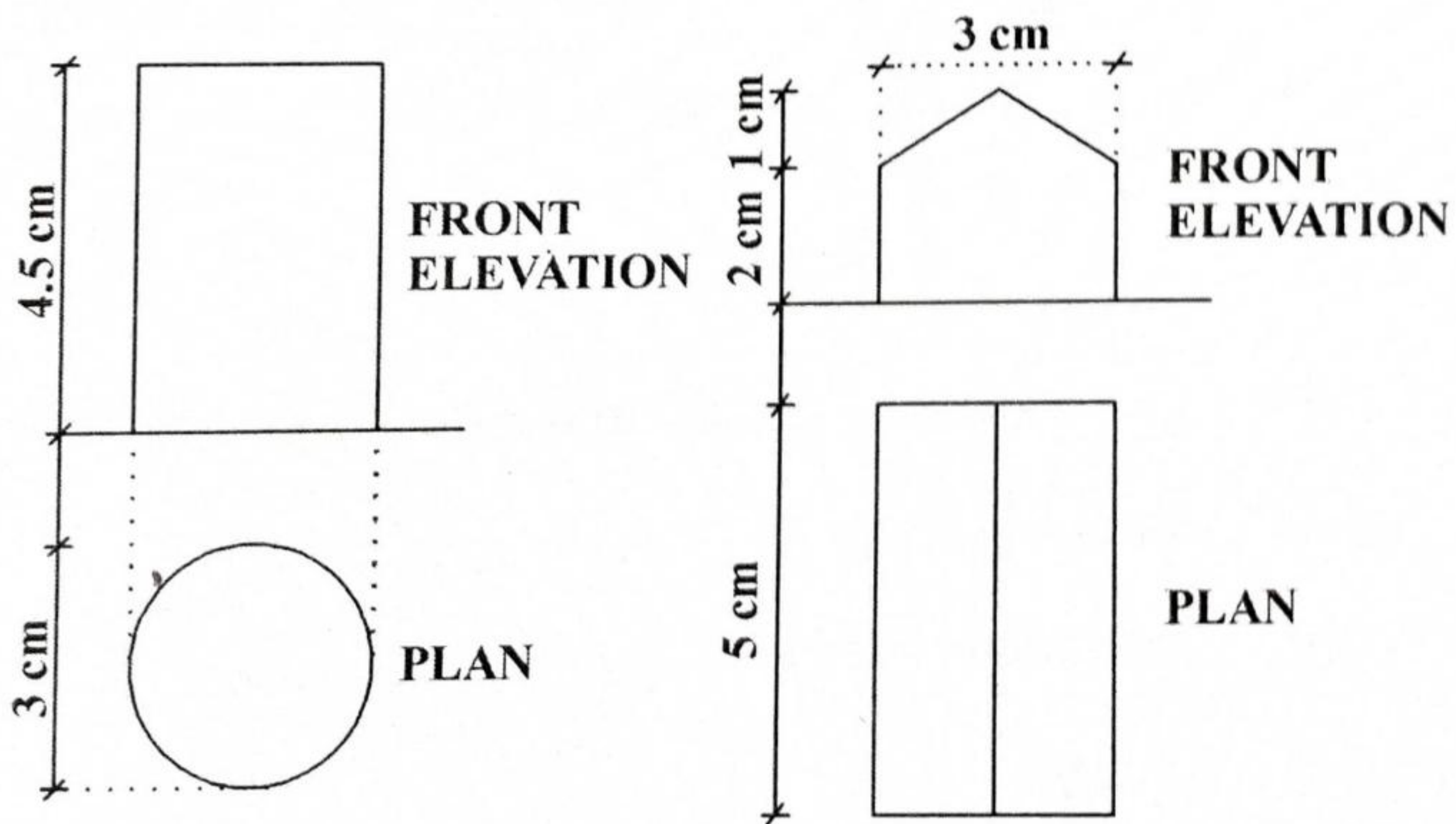


Figure-1

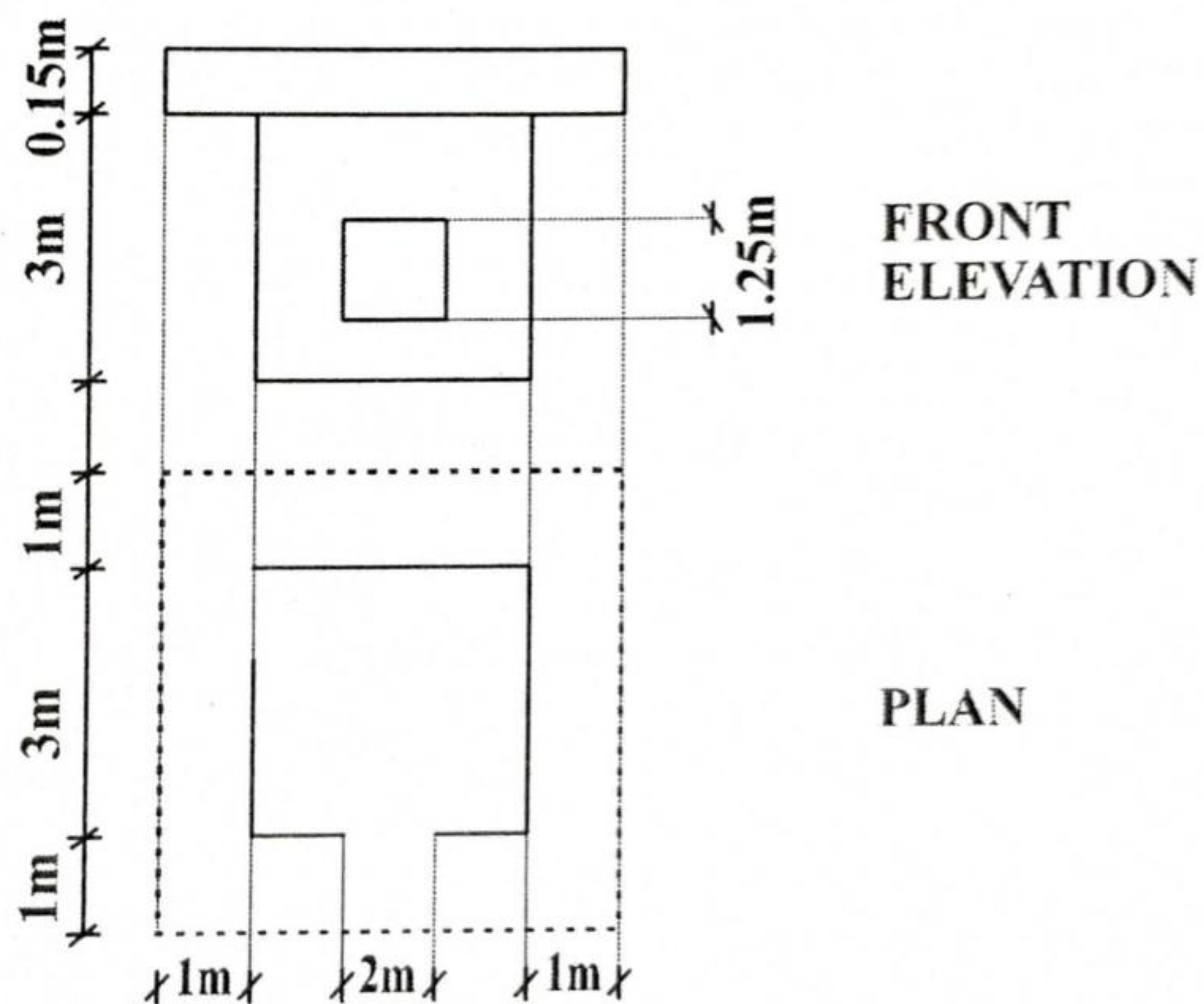
Figure-2

SECTION - C

Note :- Attempt any two questions.

2×20=40

3. Explain measuring point method in detail.
4. Draw 2 point perspective by measuring point method of given Figure-3 :



5. Draw isometric view of given Figure-4 (a) and Figure-4 (b).

[P. T. O.]

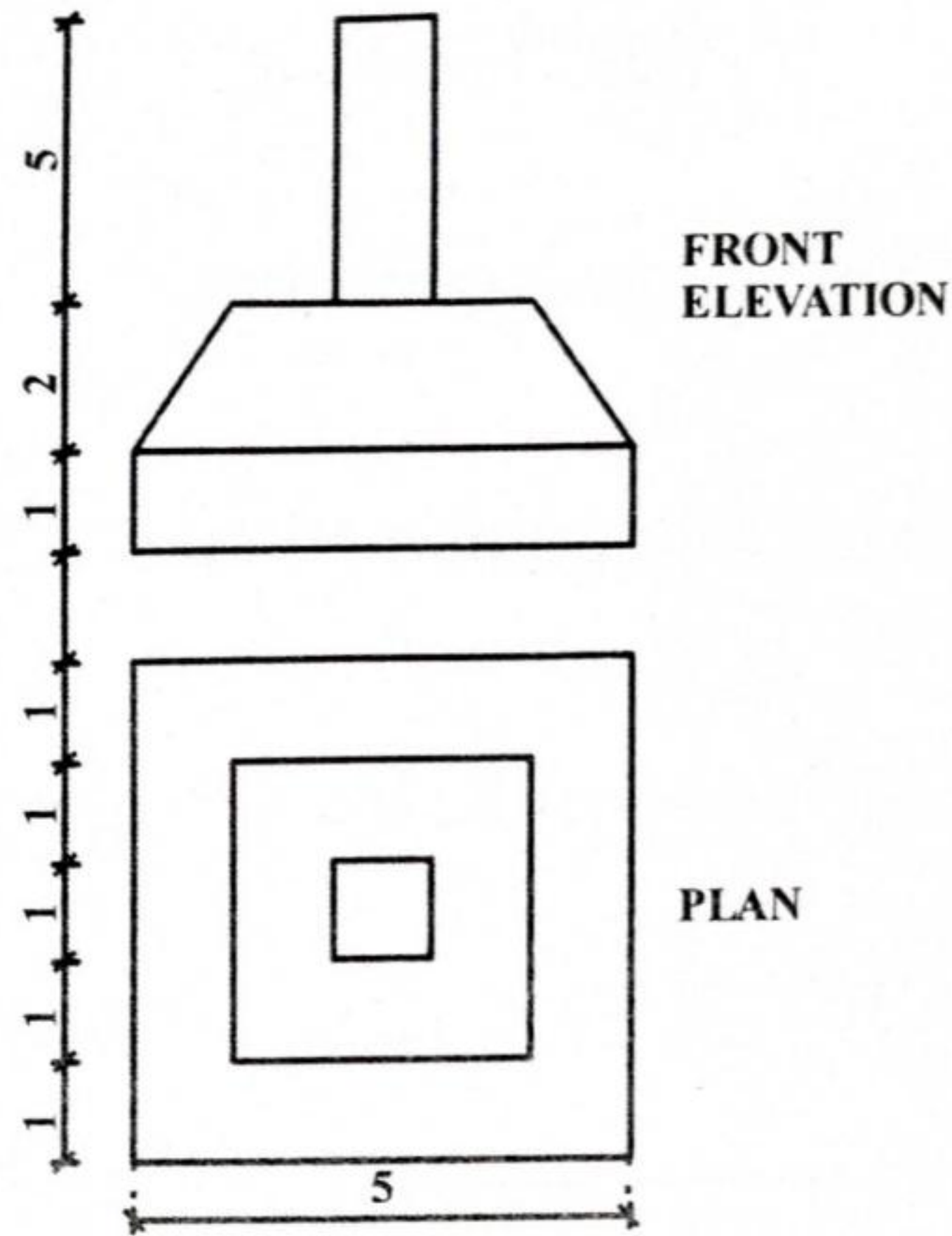


Figure-4 (a)

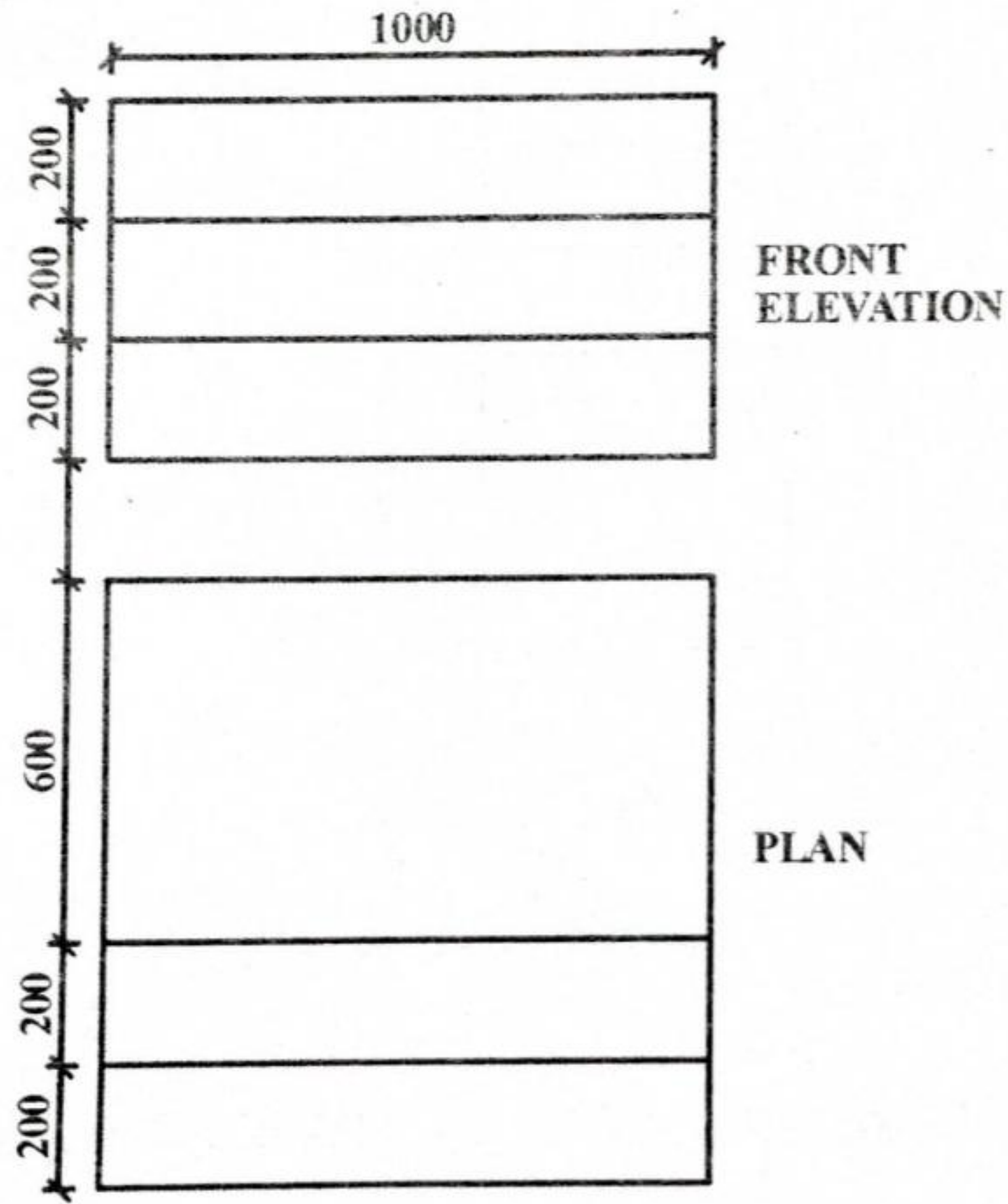


Figure-4 (b)

